

ACTIVITY BARN - ELEVATION FROM ENTRY



COMFORT STATION - ELEVATION FROM ENTRY



Notes:
Please refer to Site Plan Sheets A3.01 thru A3.17 for more detailed elevations.

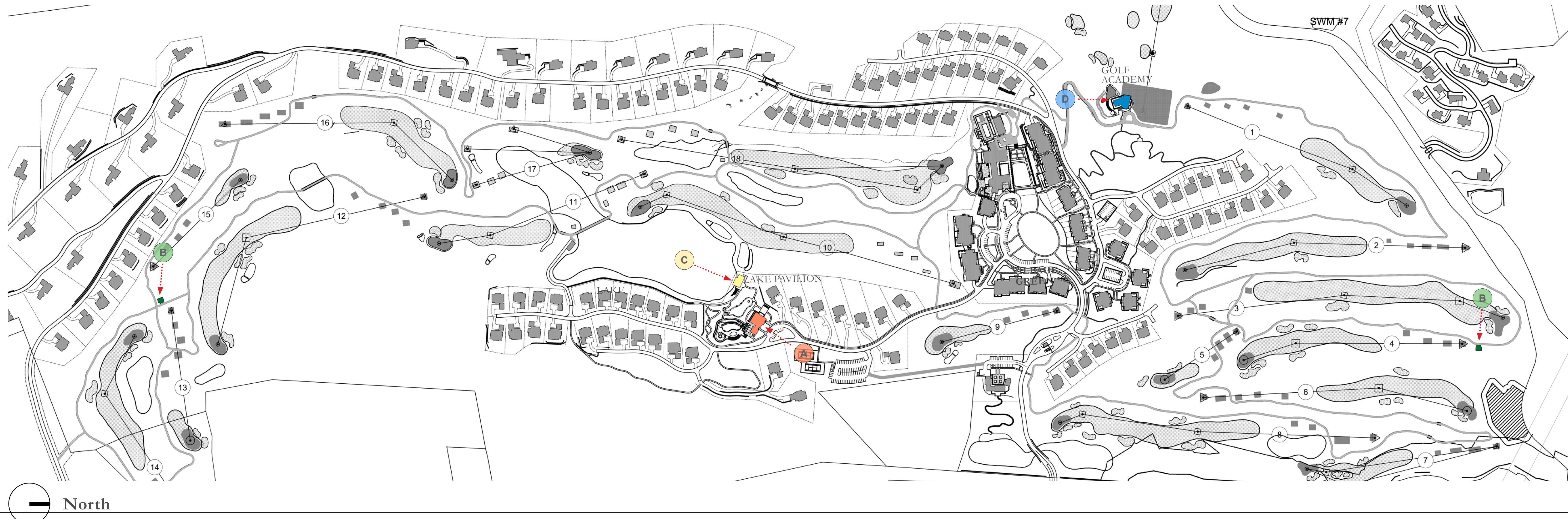
LAKE PAVILION - ELEVATION FROM LAKE



GOLF ACADEMY - ELEVATION FROM ENTRY



ELEVATION KEY PLAN (NOT TO SCALE)



OWNER:
Silo Ridge Ventures, LLC
5021 Route 44
Amenia, New York 12501
845.373.8020

ARCHITECTS, PLANNERS, LANDSCAPE ARCHITECTS:

HART | HOWERTON

10 East 40th Street New York, NY 10016
Tel: 212 683 5631 Fax: 212 481 3768
E-mail: NY@harthowerton.com

GOLF COURSE DESIGNERS:

FAZIO DESIGN

401 N. Main St., Ste. 400
Hendersonville, North Carolina 28792
828.693.0952 • FAX 828.693.0071

ENVIRONMENTAL PLANNING & CIVIL ENGINEERING:

VHB

Engineering, Surveying & Landscape Architecture, PC

Planning
Transportation
Land Development
Environmental Services
50 Main Street, Suite 360
White Plains, New York 10606
914.467.6600 • FAX 914.761.3759

WASTEWATER AND WATER DESIGN:

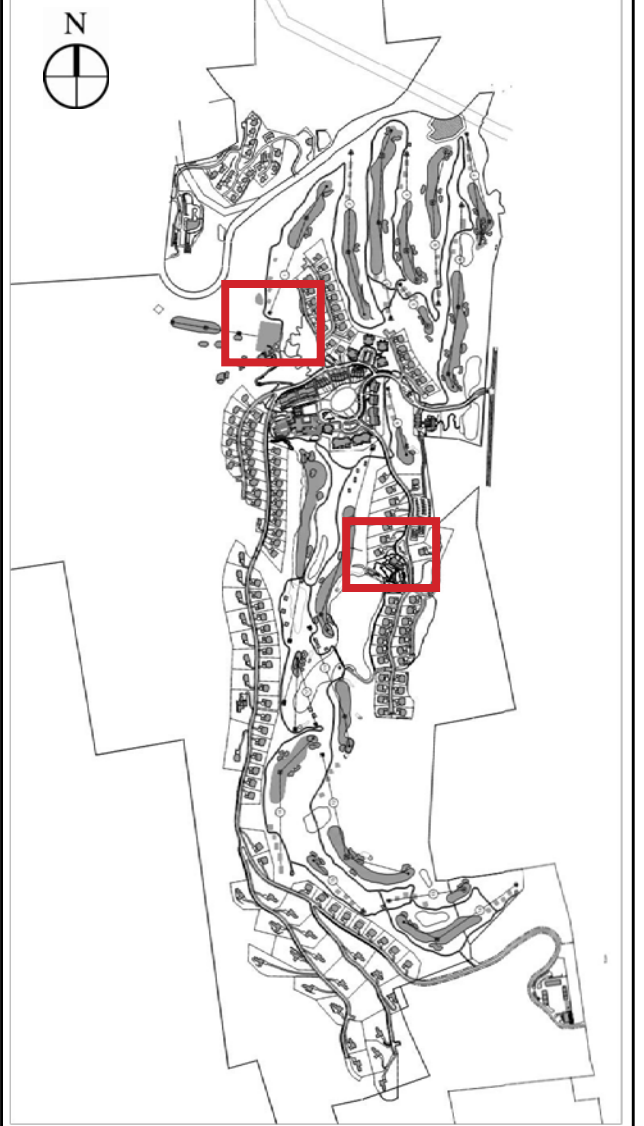
CEDARWOOD ENGINEERING SERVICES, PLLC

CIVIL & ENVIRONMENTAL ENGINEERING
8-12 Dietz St., Suite 303
Oneonta, NY 607.432.8073
248 Main St., PO Box 203
North Creek, NY 518.251.5160

PROJECT SURVEYOR:

Kirk K. Horton, Land Surveyor
NYS License No. 049954
9 Broadway
Amenia, New York 12501
845.373.7809

KEY MAP:



2	PER TOWN COMMENTS	1/8/15
1	PER TOWN COMMENTS	6/19/14

Designed by:	Drawn by:	Checked by:
CAD checked by:	Approved by:	

Scale: Date: **March 3, 2014**

Project Title:
**Silo Ridge
Resort Community
Master Development Plan**

4651 Route 22
Amenia, New York
Issues for:
**Amended Special Use Permit/
Master Development Plan
Approval**
Not Issued for Construction

ARCHITECTURAL
ELEVATIONS -
AMENITIES

Drawing Number
A-3

Sheet of
Project Number